



EBARA

EBARA Dry Vacuum Pumps

Model EV-A / EV-SA

Innovative Technology.

Compact Air Cooled Dry Vacuum Pump



EBARA EV-A / EV-SA

The EBARA EV-A and EV-SA series air-cooled dry vacuum pumps have industry-leading specifications. The non-contact, multi-staged roots is designed for reliable, particle-free vacuum generation. Typical applications include load locks, analytical instruments and metrology equipment that require the best vacuum performance and optimum uptime.

Small form factor and air cooling makes facilities hook up easy. The smart choice for applications requiring clean and contamination free environments.



Model EV-SA20

Ideal for Replacing:

Wet pumps - No more frequent oil changes or costly rebuilds

Scroll pumps - Eliminate the hassle of tip seal and bearing changes, base pressure drift

Features and Benefits



Energy Efficient Air-Cooled Motors



Low Noise / Vibration



Class Leading Water Vapor Pumping



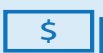
Non-Contact Design



High Atmospheric Pumping Speeds



Maintenance Free

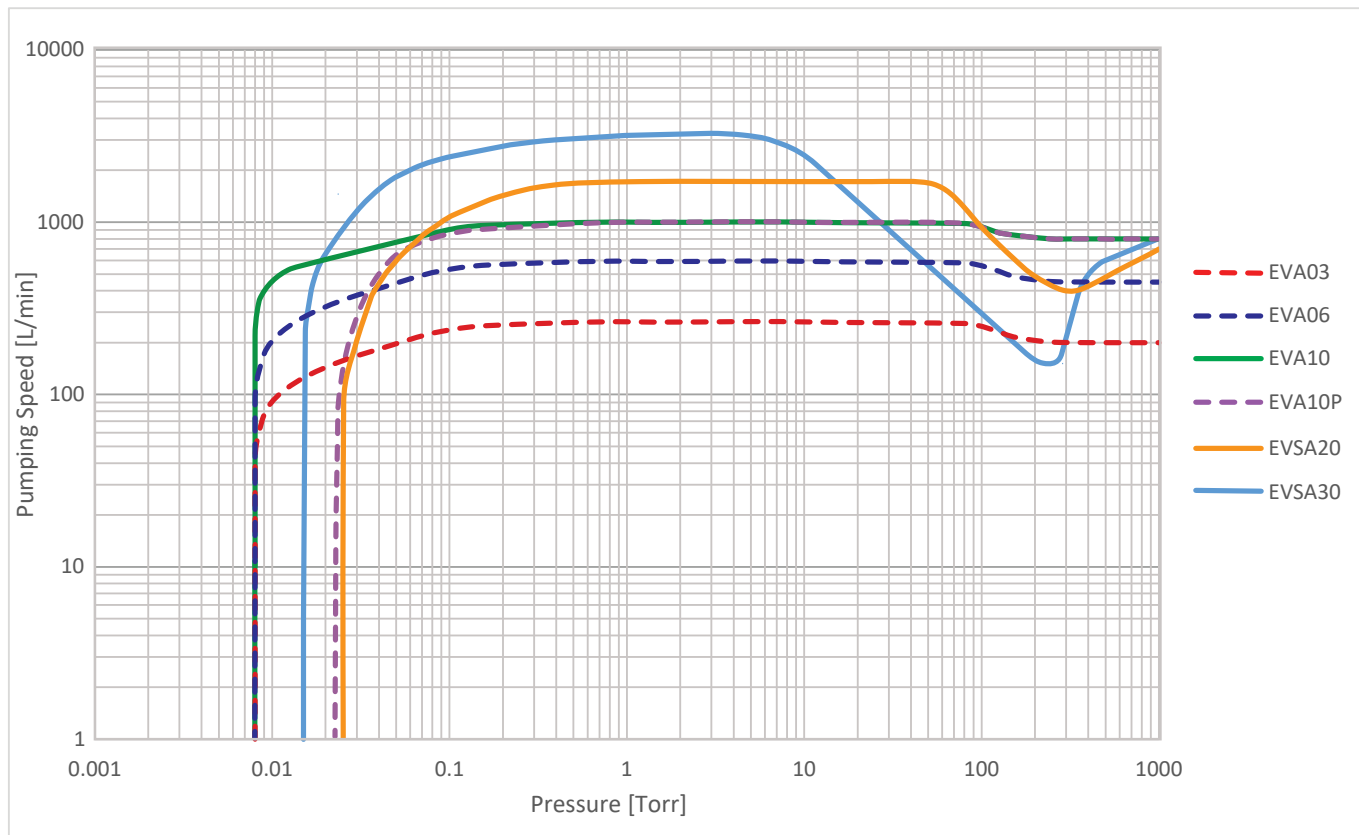


Lowest Cost of Ownership



Approved CE and NRTL Rated

Pumping Curves



EV-A03



EV-A06



EV-A10P

Accessories

Solvent Traps



Water Vapor Traps



Silencer

Remote Controller



Gas Ballast Valve

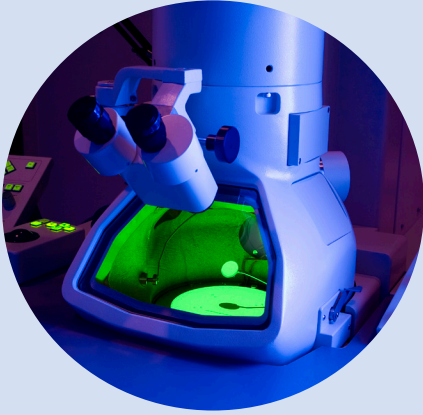
Casters and Adjustors



Inlet Safety Valve

Applications

Instrumentation



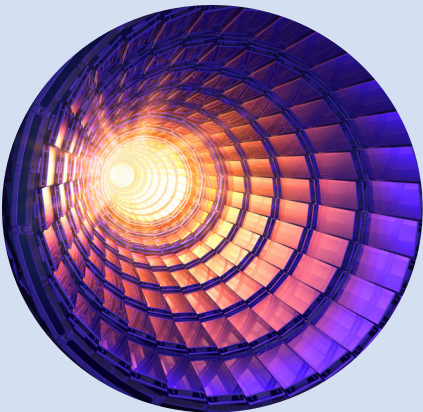
- Turbo Pump Backing
- Analytical Instruments
- Electron Microscopes
- Helium Leak Detection
- GCMS/LCMS Mass Spectrometry

Industrial



- Glove Boxes
- Vacuum Ovens / Lyophilization
- Sterilizers
- Surface Treatment Plasma Systems
- High Purity Gas Cylinder Filling

Academic & Research



- Space Simulation Chambers
- Lasers
- Beam Line & Synchrotrons
- R&D Labs
- Battery Technology Manufacturing

And Many More Applications...

Specifications

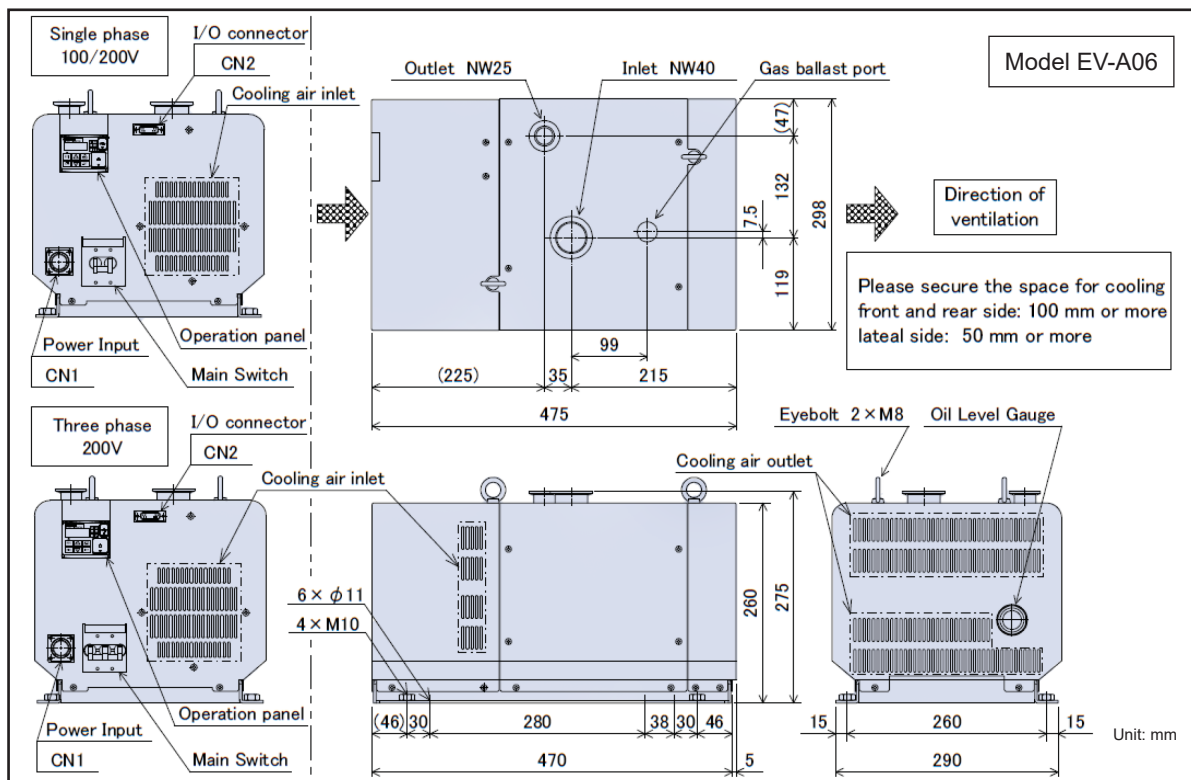
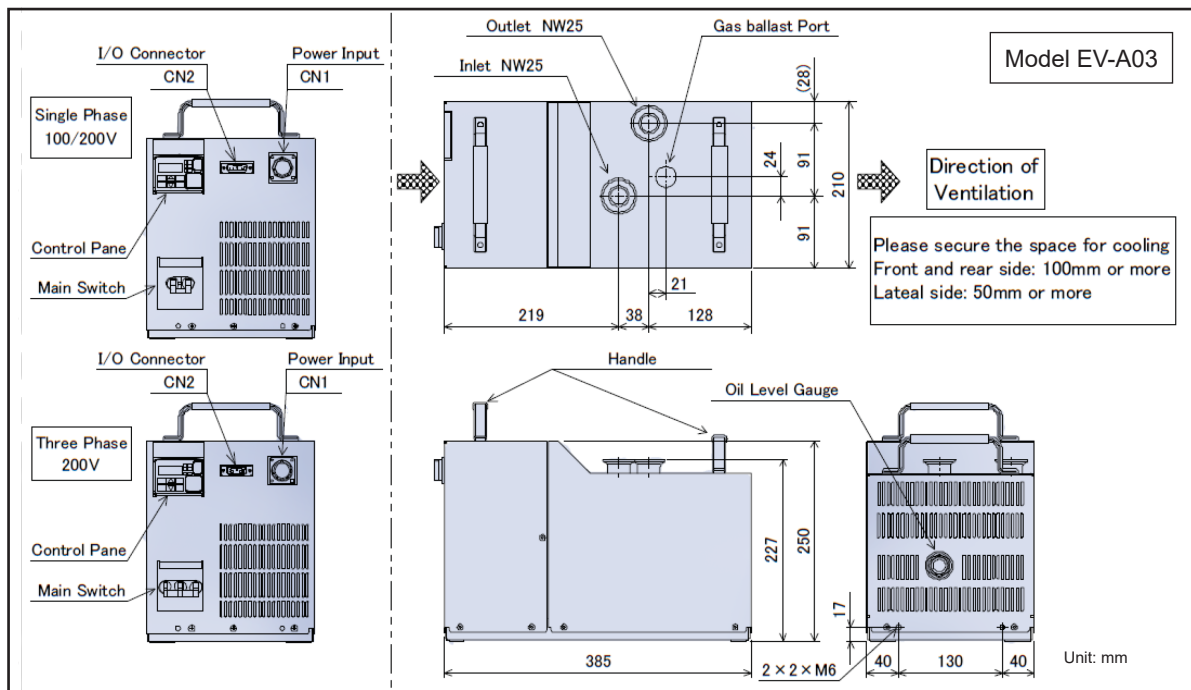
Model			EV-A03	EV-A06	EV-A10/P	EV-SA20	EV-SA30
Pumping speed	Max.	L/min	250	600	1,000	1,670	3,300
		CFM	9	22	36	60	120
		m ³ /hr	15	36	60	100	200
Ultimate Pressure	Gas Ballast: Off	Pa	1.0			3.0	2.0
		mBar	0.01			0.03	0.02
		mTorr	7.5			22.5	15
	Gas Ballast: On	Pa	10.0		3.0	5.0	3.0
		mBar	0.1		0.03	0.05	0.03
		mTorr	<75.0		22.5	37.5	22.5
Max. Inlet Pressure		Atmospheric Pressure					
Max. Water Vapor Pumping Rate (Gas Ballast: On)		g/hr	250	350	500	100	30
Connection	Gas Inlet		NW25	NW40			
	Gas Outlet		NW25		NW40		
Approx. Power at Ultimate Pressure		kW	0.35	0.55	1.1	0.45	0.45
Approx. Weight	kg		23	54	75	65	90
	lb		51	119	165	143	198
Power Supply	[1 Phase/100V model]		1 Phase, 100-115V, 50/60Hz		-----		
	[1 Phase/200V model]		1 Phase, 200-240V, 50/60Hz				
	[3 Phase/200V model]		3 Phase, 200-240V, 50/60Hz				
Airborne Noise Test Data		dB (A)	<56	<57	<58		

Application Example

EV-A10P set up for water vapor handling

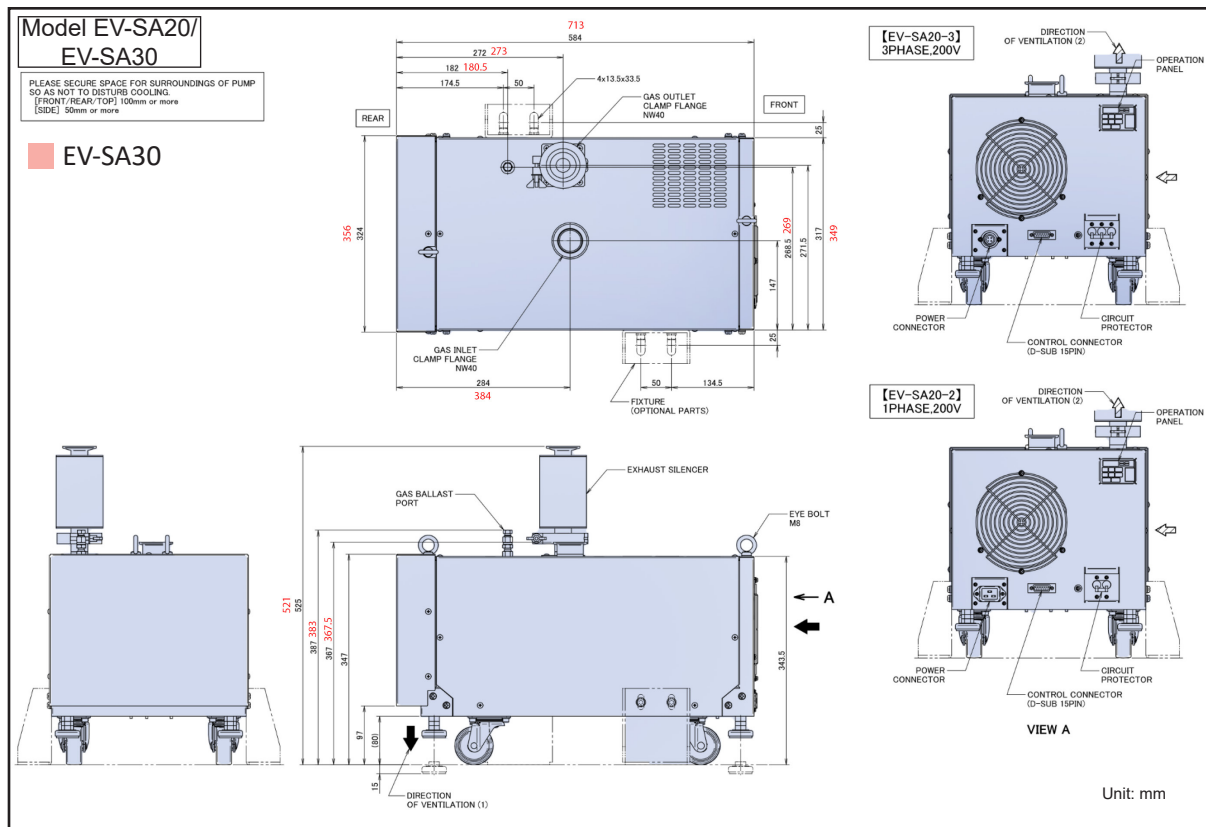
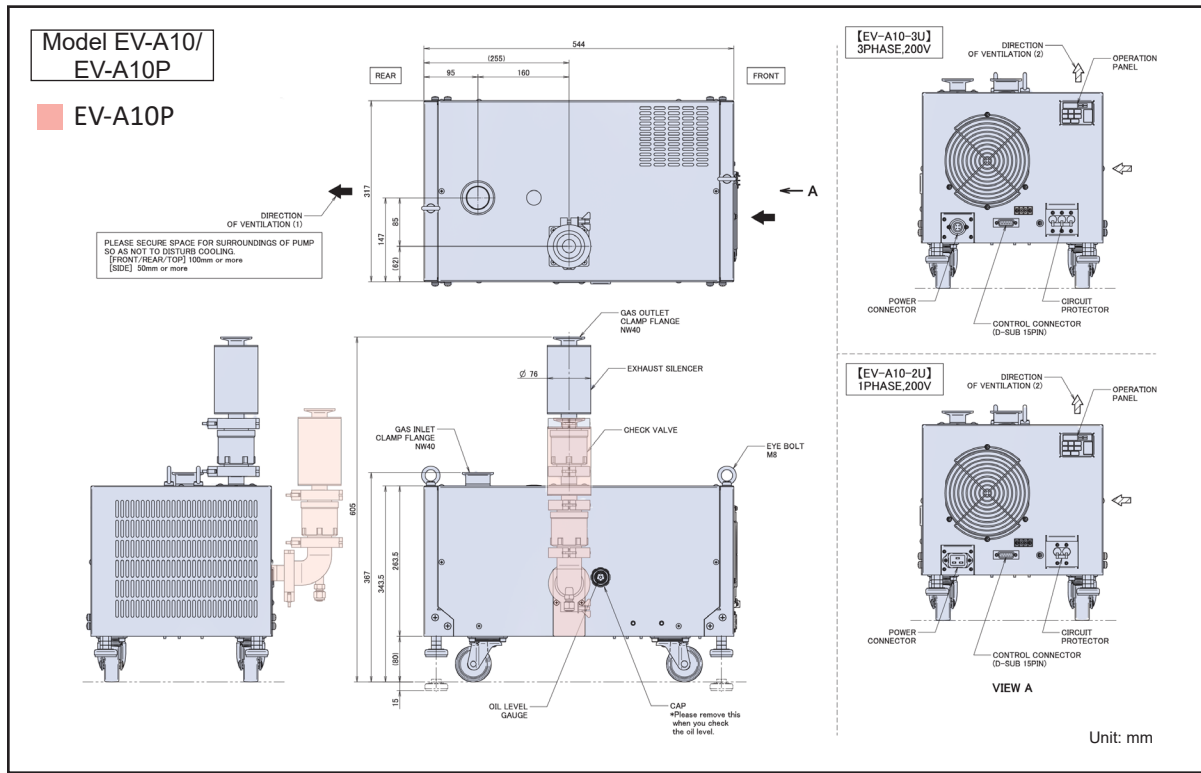


Drawings



All specifications are subject to change without notice.

Drawings



All specifications are subject to change without notice.

**EBARA Technologies, Inc.**www.ebaratech.com

51 Main Avenue, Sacramento, California 95838 — Phone: 1-800-535-5376 Fax: 1-916-925-6654

EBARA Corporation Precision Machinery Companywww.ebara.com/en/business/precision

2-1, Hon-Fujisawa 4-chrome, Fujisawa Kanagawa, 251-8502, Japan — Phone: 81-466-83-9000 Fax: 81-466-83-1100

EBARA Field Tech. Corporationwww.eft.ebara.com

2-1, Hon-Fujisawa 4-chrome, Fujisawa Kanagawa, 251-8502, Japan — Phone: 81-466-83-9171 Fax: 81-466-83-1100

GLOBAL NETWORK**U.S.A.**

EBARA Technologies, Inc
Headquarters: Sacramento, CA
FSC: Sacramento, CA
QRC: San Jose, CA
E. Fishkill, NY
Hillsboro, OR
Newburyport, MA

EUROPE

EBARA Precision Machinery Europe GmbH
Headquarters: HANAU, Germany
FSC: Livingston, UK
QRC: Dresden, Germany
Evry, France
Meyreuil, France
Kildare, Ireland
Haifa, Isreal

JAPAN

EBARA Corporation Precision Machinery Company
Headquarters: Fujisawa, Japan
FSC: Tohoku Fukusima
Hokuriku Toyama
Chubu Mie
Kyusyu Fukuoka
QRC: Kitami Iwate
Tohoku Miyagi
Ibaraki
Chubu Mie
Osaka
Hiroshima
Shikoku Ehime
Fukuoka
Oita
Kumamoto

KOREA

EBARA Precision Machinery KOREA INC
Headquarters: Seoul
FSC: Mogok-Dong

CHINA

Shanghai EBARA Precision Machinery Co., LTD
Headquarters: Shanghai
FCS: Shanghai
QRC: Wuxi

TAIWAN

EBARA Precision Machinery TAIWAN INC
Headquarters: Taipei
FSC: Hu-ko
QRC: Linkou
Taichung
Tainan

SINGAPORE

EBARA Engineering Singapore Pte. Ltd.
Headquarters: Tuas Link
FSC: Tuas Link

Patent Pending

UL® and C-UL® are registered trademarks of Underwriter's Laboratories, Inc.

"Model EV-A" and "Model EV-SA" are our model codes.

All specifications are subject to change without notice.

© EBARA Technologies, Inc. | 2017 Printed in USA



0182-L1211201, Rev. G