

EST Series Dry Pumps



Technology • Reliability • Service

EST Series Dry Pumps

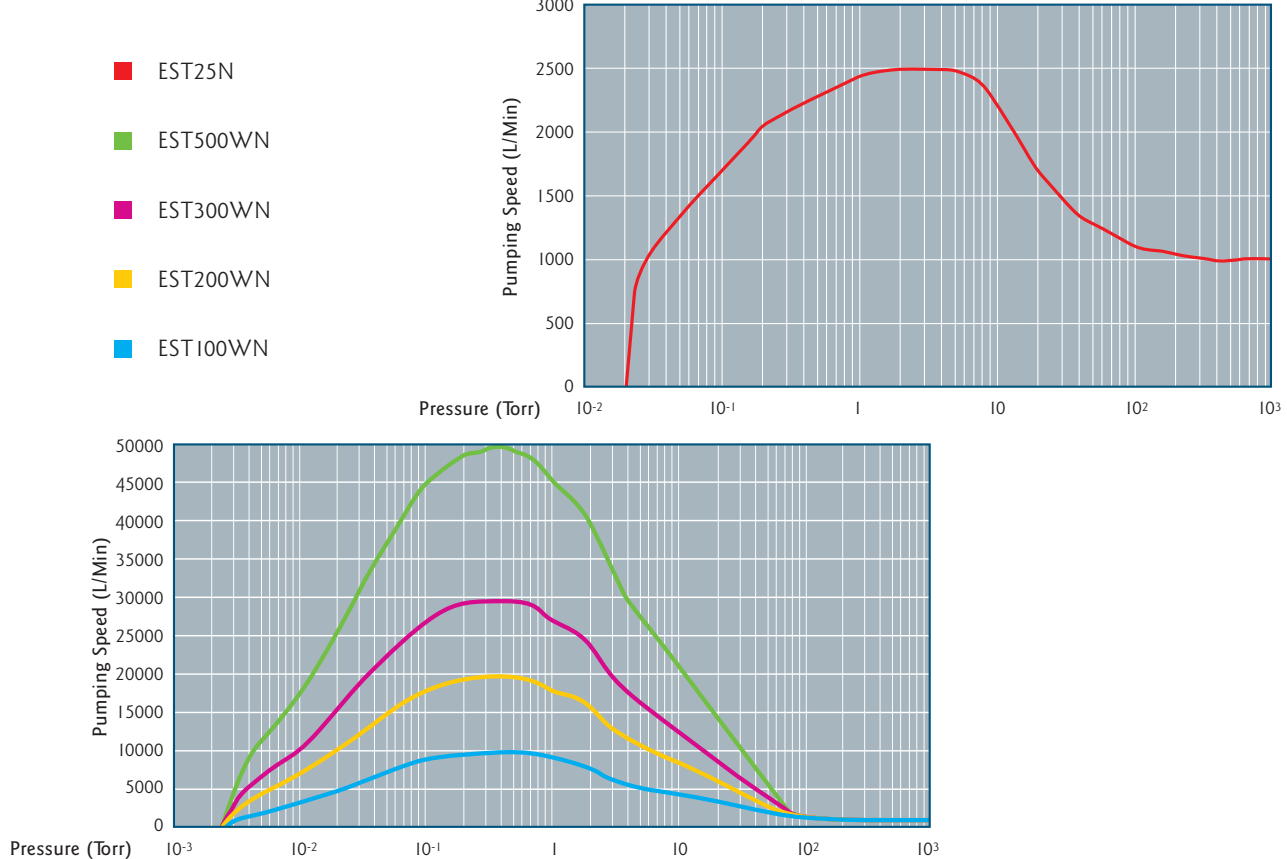
The EST Series consists of a two-stage screw design main pump engineered for application in harsh duty processes. The main pump is packaged with a lobe style booster pump for increased pumping speed. The EST Series covers a wide pumping speed range from 88 to 1766 CFM. EST pumps are designed and manufactured to be the lowest cost of ownership pumps on the market today. The main pump is constructed of NiResist, a solid cast material known for its superior corrosion resistance.

Features

- Low Cost of Ownership [Power, N2, Water, Footprint, Volume, Weight]
- Variable pumping speed to match application requirements
- High performance brushless DC motors
- State-of-the-art control and monitoring devices
- Idle mode can be employed for increased utility savings
- SEMI S2 assessed, NRTL Listed, CE Marked

Performance Curves

EST Series Pumping Speed



Dry Pump Applications

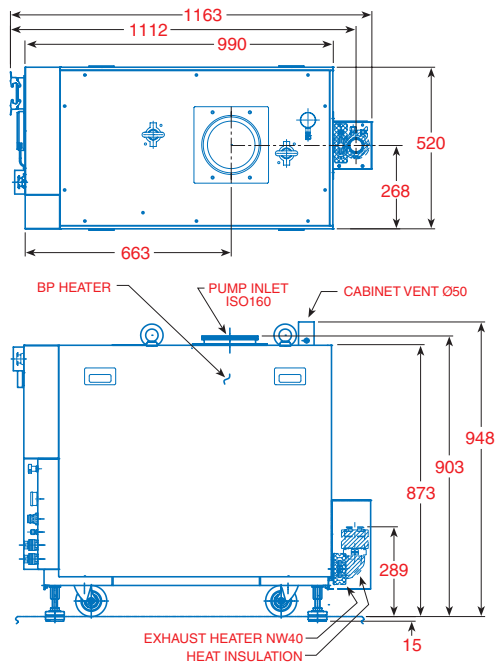
Process	Etch	Metal Etch	PE-CVD	LP-CVD	PE-CVD(SIN)	LP-CVD(SIN)
EST SERIES	•	•	•	•	•	•

24/7 Direct Service and Support

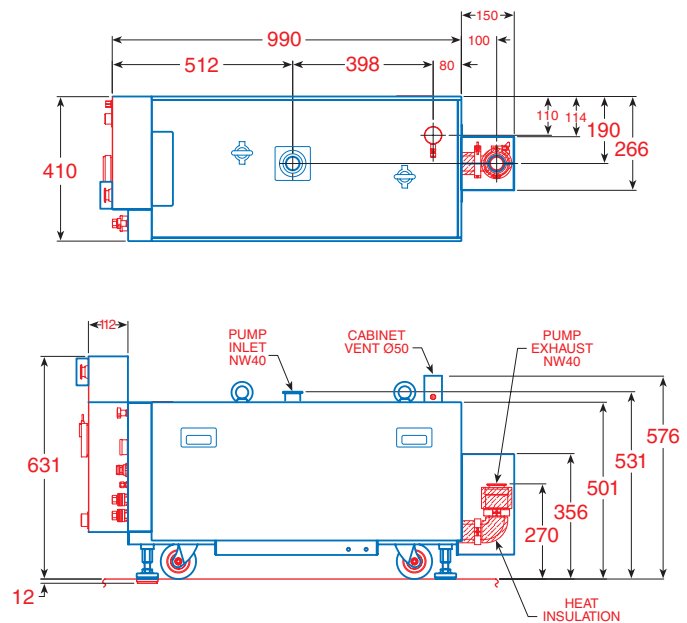
If you require an immediate service response, please contact the nearest EBARA Service Center or you may call 1-800-535-5376. EBARA Service is available 24 hours a day 7 days a week to provide on-site support through our extensive network of Service and Quick Response Centers.

Dimensions (mm)

EST500WN



EST25N



Specifications

		EST25N	EST100WN	EST200WN	EST300WN	EST500WN
Pumping Speed (min. RPM - max. RPM)	CFM	88	176 - 353	353 - 706	530 - 1060	883 - 1766
	L/Min	2,500	5000 - 10,000	10,000 - 20,000	15,000 - 30,000	25,000 - 50,000
	M ³ /Hr	150	300 - 600	600 - 1200	900 - 1800	1500 - 3000
Ultimate Pressure	mTorr	20	5	4	4	4
Inlet Connection		NW 40	NW 50	ISO 80	ISO 100	ISO 160
Outlet Connections		NW 40	NW 40	NW 40	NW 40	NW 40
Cooling H ₂ O (minimum flow)	L/Min	5	5	5	5	5
Bearing & Dilution N ₂	L/Min	18 to 20	18 to 20	18 to 20	18 to 20	18 to 20
Cabinet Dimensions LxWxH	mm	990 x 410 x 501	990 x 410 x 851	990 x 410 x 851	990 x 520 x 873	990 x 520 x 873
Cabinet Dimensions LxWxH	~ inch	39 x 16 x 19.7	39 x 16 x 33.5	39 x 16 x 33.5	39 x 20.5 x 34.4	39 x 20.5 x 34.4

Complete product line to meet the needs of your Fab

Dry Vacuum Pumps



Turbomolecular Pumps



Point-of-Use Abatement



Contamination Control



EBARA Technologies, Inc.

Family of Products

Dry Vacuum Pumps

Turbomolecular Pumps

Point-of-Use Abatement

Ammonia Monitor

Ozonized Water Generator

Ultra Clean Ozone

AMC Filters

E-Cube Wafer Carriers

Global Service Network

ASIA

Fujisawa, Japan (Headquarters)
Seoul, Korea
Taipei, Taiwan
Singapore, Singapore

EUROPE

Hanau, Germany (Main Office)
Livingston, U.K.
Newcastle, U.K.
Enry, France
Meyreuil, France
Dresden, Germany
Alsdorf-Mariadorf, Germany



EBARA Technologies, Inc. • 51 Main Avenue • Sacramento, California 95838, U.S.A.
Tel: 916.920.5451 • Fax: 916.925.6654 • www.ebaratech.com